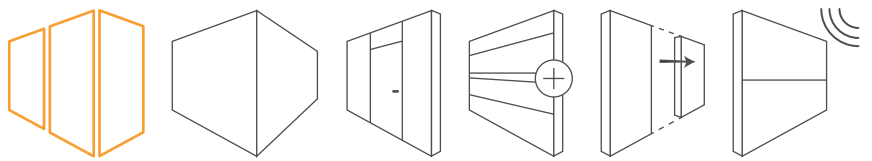


Wall Cladding Systems

Snap Cladding



Snap Cladding CL-45 & CL-85

Wall Cladding Systems

System is designed to ensure covering all architectural and technical requirements. As a clipped system, the basis of this highly practicable partition wall system is TRIMline stud with integrated steel spring for panels, doors and also mechanical & electrical equipment.

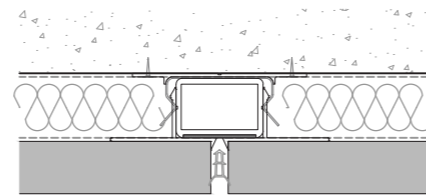
Wood panels (melamine, laminate, lacquered, natural wood veneered, acoustical etc.), back painted glass, compact laminate, fabric panels are can be used as finishing material.

Fire cabinet, recycle bin, waste bin, locker, billboard and such like items are easily adopted to the system with flush finishes.

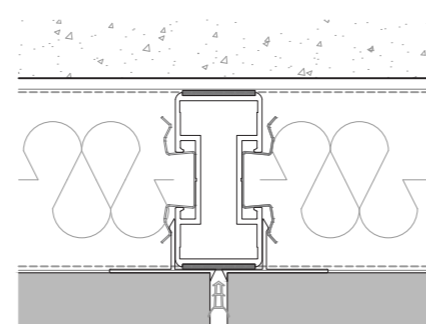
CL-45 Slim Cladding is ideal solution for critical narrow spaces which has very limited place for cladding. The system can be mounted to the existing wall with 45 -50 mm thickness. It can be used up to 3500 mm height. The system is needed to be fixed to the existing wall with brackets.

CL-85 Standard Cladding is constructive system which can be stand-alone, and also can be installed up to 8000 mm height. This system can be used also as a ceiling and beam cladding as well as wall cladding.

CL-45



CL-85



Design

Design with stud

Options

CL – 45 Slim Cladding

CL – 85 Standard Cladding

Thickness

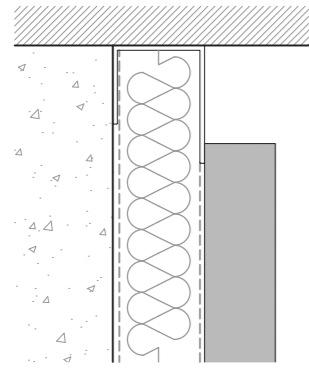
45 mm (CL – 45) / 85 mm (CL-85)

Surface

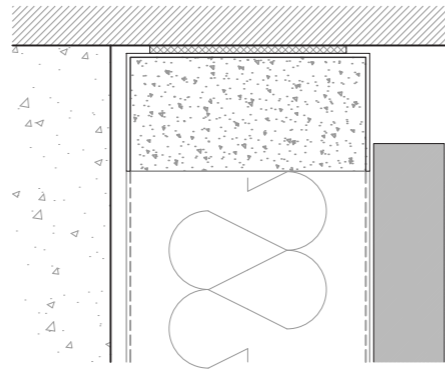
Wood panels (melamine, laminate, lacquered, natural wood veneered, acoustical etc.), back painted glass, compact laminate, fabric panels

Joints

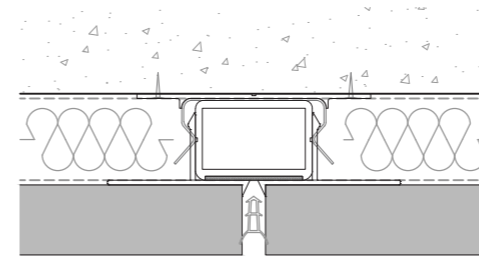
6 mm – horizontal & vertical



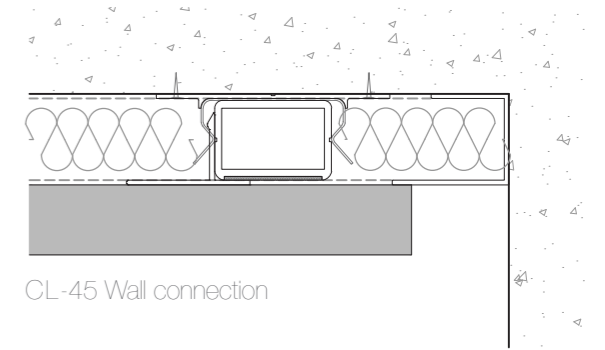
CL-45 Ceiling connection



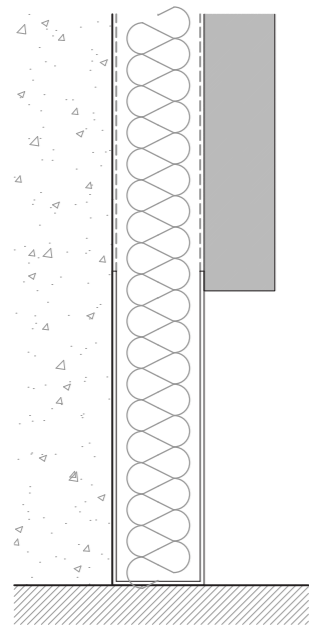
CL-85 Ceiling Connection



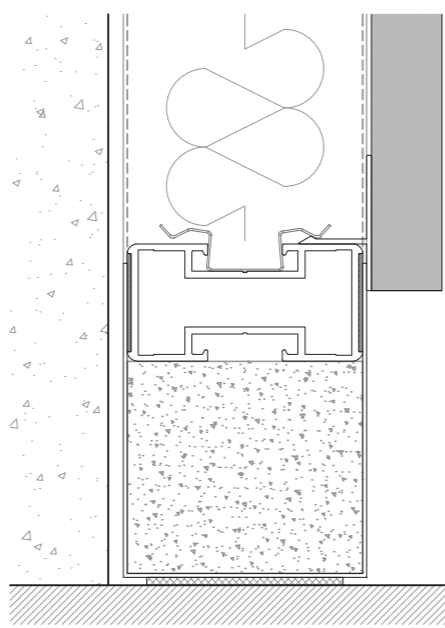
CL-45 Panel-panel connection



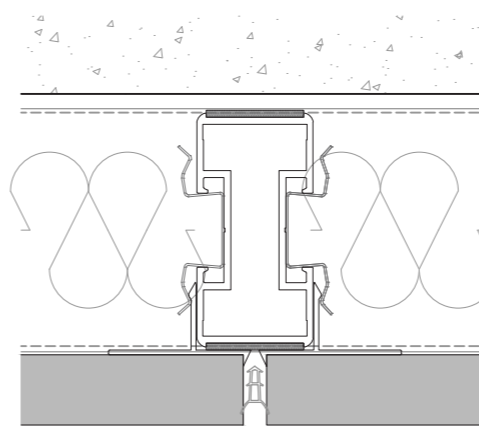
CL-45 Wall connection



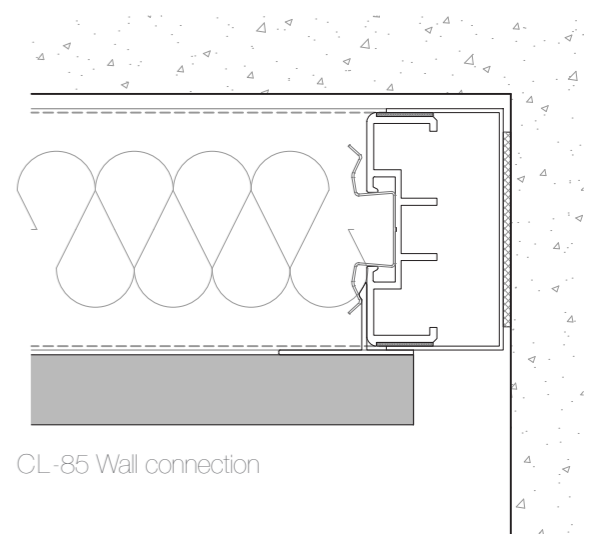
CL-45 Floor connection



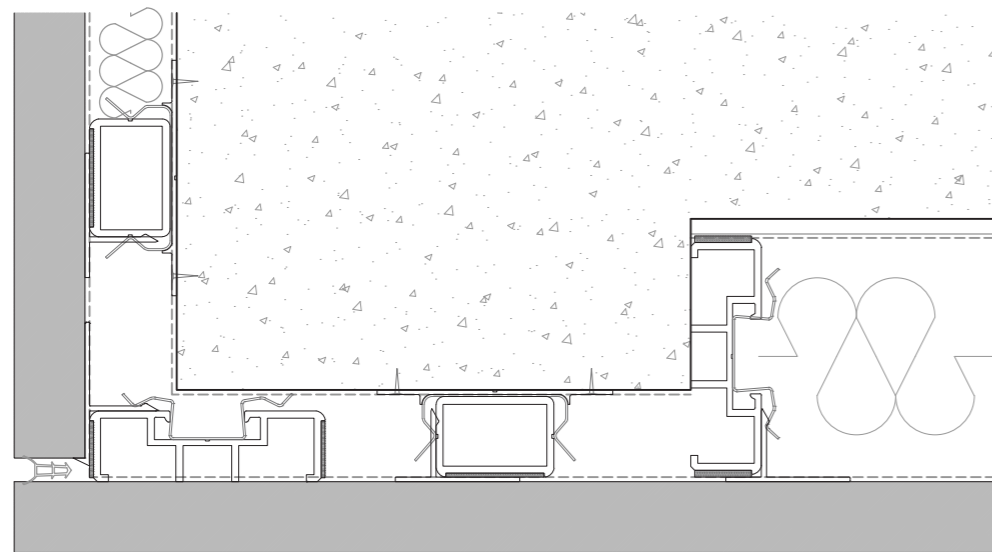
CL-85 Floor connection



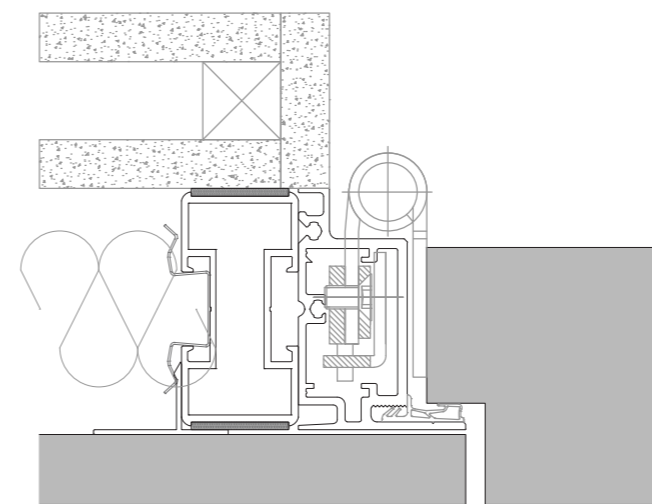
CL-85 Panel-panel connection



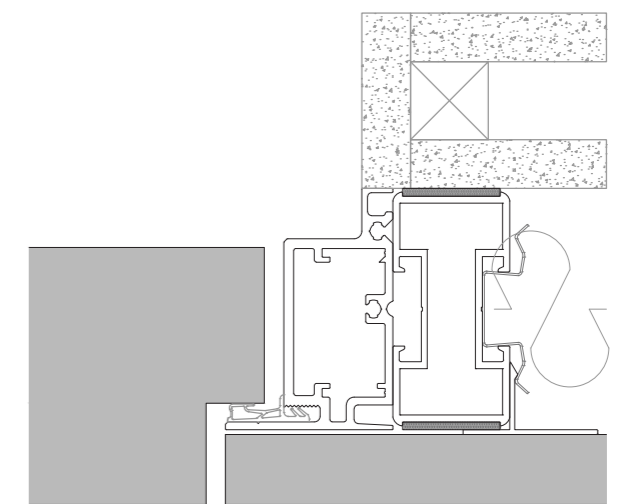
CL-85 Wall connection



Combination of CL-45 & CL-85



Hidden flush door detail



Cladding system	
Dimensions	Dependent on construction
Wall Thickness	85 mm - CL-85 / 45 mm - CL-45
Widths	Preferred Grid are ; For Full Height Modules: 3000/600/900 mm For Horizontally Divided Modules : 300/600/900/1200/1500/1800 mm. And also all intermediate dimensions
Heights	Standard Sizes are ; 2500 / 2700 / 3000 mm / and also all intermediate dimensions
Weights	35 - 52 kg/m2
Joints	6 mm - in horizontal and verticals
Posts	Special steel springs on aluminium posts
Horizontal Connection	Horizontal leveling adjustable pieces
Horizontal leveling adjustable pieces	Rockwool
Skirting Details	h = 75 / 50 / 25 mm recessed Aluminium Skirting (E6/EV1 anodised or powder coated) Also 25 mm on top and wall connection
Electric Base	100/150 mm aluminium relocatable electric profile for both vertical and horizontal usage
Tolerance	In Height and width + - 20 mm
Wall Panels	E1 Quality 18 mm Panels - B2 standart
Surfaces	18 mm Melamine / Laminate / Back Painted Glass / Veneered Panel / Fabric / RAL Laquered / Acoustical MDF / veneered Panels - 12 mm Compact Laminate For Special Choice
Door Frames	Aluminium , E6/EV1 anodised or powder coated
Door Leaves	40-66 mm thickness door leaf - Laminate / Back Painted Glass / Veneered / RAL Laquered
Door Ironmongery	2 / 3 pcs. Adjustable hinges , and other hardware according to customer's choice



Tirim İnşaat Mimarlık A.Ş.
www.trimline.com.tr
info@trimline.com.tr

Headquarter / Showroom
Esentepe Mh. Kelebek Sok. Marmara Kule
A Blok N.2 K.13 D.105 Kartal / İstanbul
T +90 216 572 70 20
F +90 216 573 34 35

Factory
1. Organize Sanayi Bölgesi,
Gaziosmanpaşa Mah. Savaştepe Yolu,
2.Cad. No.13 Altieylül / Balıkesir / Turkey
T +90 266 281 12 12
F +90 266 281 12 97

TRIMline[®]
interiors

■ Partition Wall Systems
■ Wood Systems