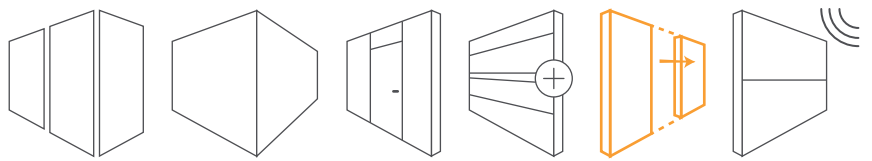


Movable Wall Systems

TRIMline MW

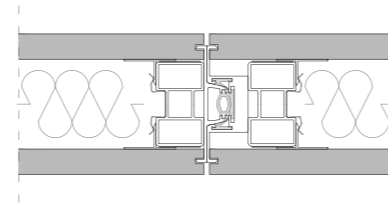


TRIMline MW

Movable wall system
Wall thickness 100 mm



Solid Movable Wall



As a movable partition system TRIMline MW provides freedom for space design and usage.

MW system with high technical values which ensures panels hanging from the ceiling with a hidden rail element supplies high rate of sound insulation.

Operating system can be easily and practically directed. Hereby a huge space can be transformed into small spaces in a short time.

Solid surface elements varies such as melamine, fabric, laminate, veneered. Door elements are also placed within a movable panel.



Design

Movable solid elements

Finish

Melamine, laminate, veneered, fabric

Track

Aluminium track - RAL 9010 colored

Operation

Manuel

Wall thickness

100 mm

Construction

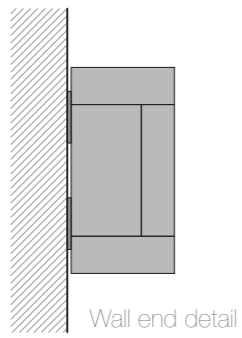
Aluminium construction profile resisted to bending

Sound insulation

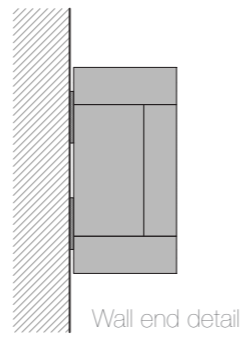
48 dB

Doors

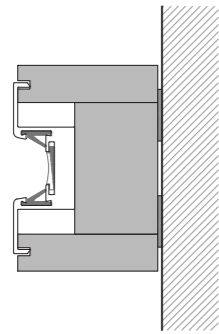
Door within panel



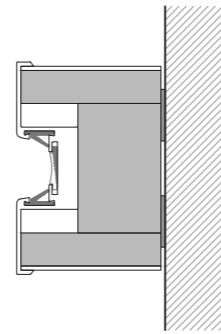
Wall end detail



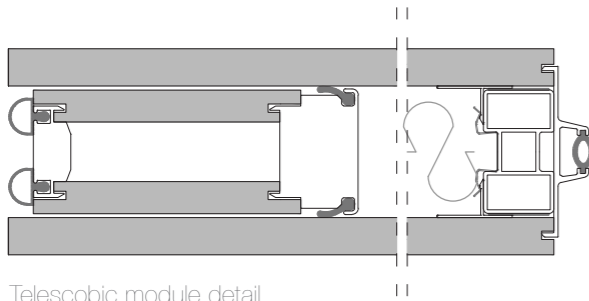
Wall end detail



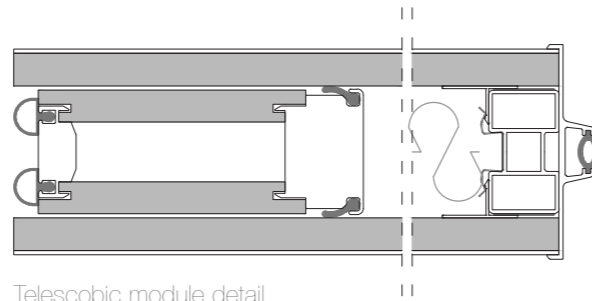
Concealed profile wall beginning module



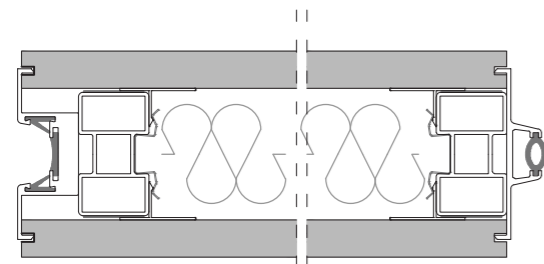
Exposed profile wall beginning module



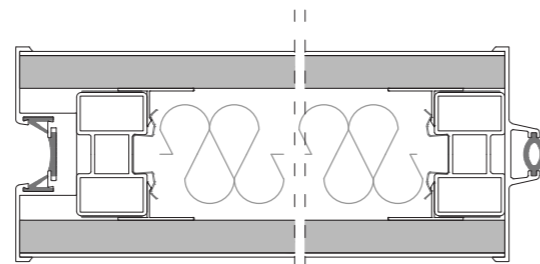
Telescopic module detail concealed profile



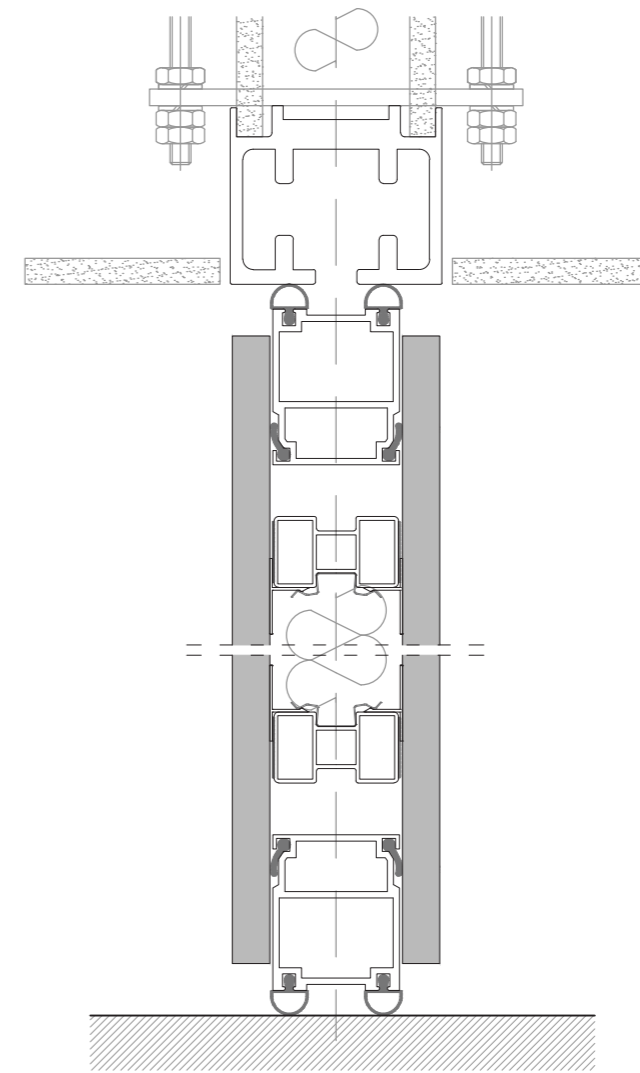
Telescopic module detail exposed profile



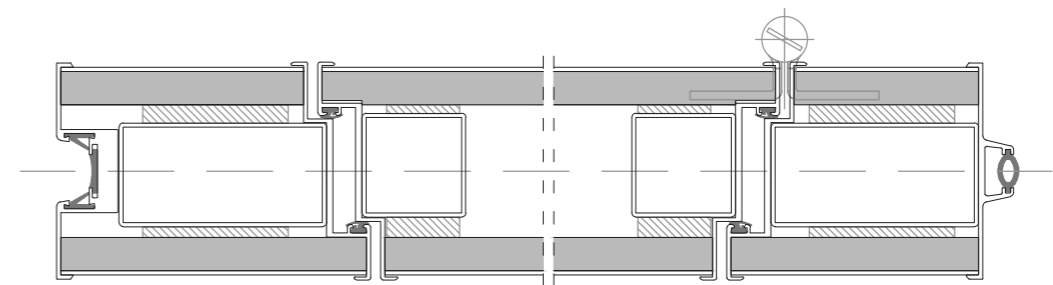
Movable module detail concealed profile



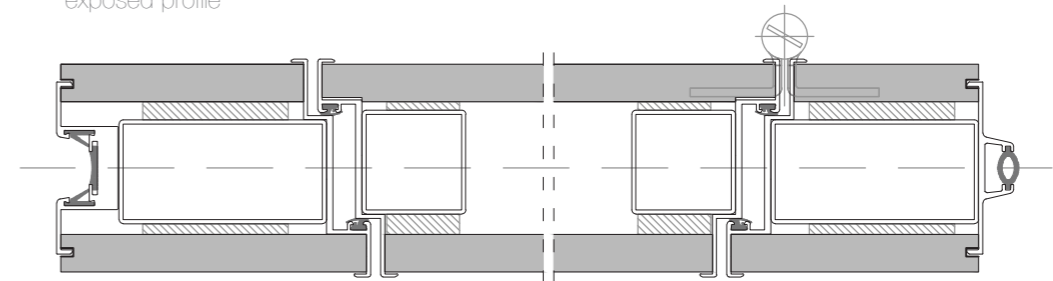
Movable module detail exposed profile



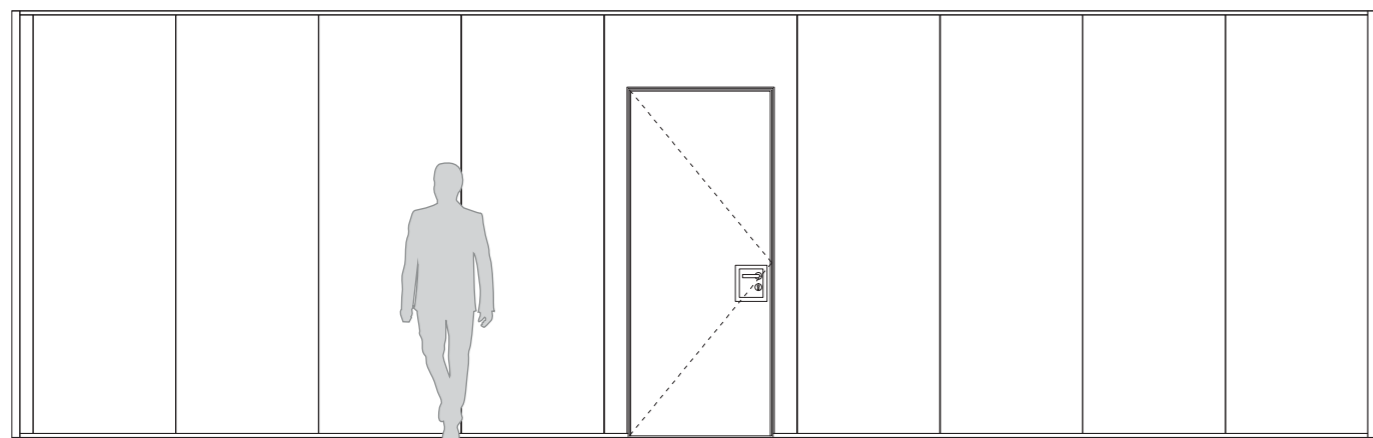
Vertical section



Door panel exposed profile



Door panel concealed profile



Movable Wall

Movable wall systems	
System thickness	100 mm
Width	Min. wid: 750 mm. Max. wid: 1.250 mm
Height	Min. H: 2.000 mm. Max. H: 6.000mm
Panel Material	18 mm. E1 / V20 High quality chipboard
Surface cover	Melamine (Standard) / HPL - fabric - lacquered (Optional)
Construction	Aluminium construction profile resisted to bending
Sound insulation	42 - 48 dB
Panel joints	Magnetic strip on the vertical panel edges - Tongue and groove connection
Edge detail	EP - Exposed profiled edge detail (8 mm. profile in vertical) - Standard HP - Hidden jointing edge detail (4 mm. profile in vertical) - Optional
Insulation tapes	Aluminium top insulation tape 20 mm. (Force 1500 N) Aluminium bottom insulation tape 25 mm. (Force 1500 N Straight)
Control system	Manual
Track	Up to 4 m. top aluminium track (RAL colored) Steel track RAL colored for 4-6 m
Roller	Single roller (H: 3000 mm. max.) - Double roller
Door unit	Single door / Double door (including leaf, handle, lock and hinges made of stainless steel)
Telescopic Module	100 mm. opening and closing range is needed at horizontal level
Corners	90°
Certificates	48 dB from FTI



Tirim İnşaat Mimarlık A.Ş.
www.trimline.com.tr
info@trimline.com.tr

Headquarter / Showroom
Esentepe Mh. Kelebek Sok. Marmara Kule
A Blok N.2 K.13 D.105 Kartal / İstanbul
T +90 216 572 70 20
F +90 216 573 34 35

Factory
1. Organize Sanayi Bölgesi,
Gaziosmanpaşa Mah. Savaştepe Yolu,
2.Cad. No.13 Altıeylül / Balıkesir / Turkey
T +90 266 281 12 12
F +90 266 281 12 97

TRIMline[®]
interiors

■ Partition Wall Systems
■ Wood Systems